

**Glebe, NSW 2037, address available on request****Call Agent**

Retail Shop



## 70 GLEBE POINT ROAD GLEBE

HIGHLY VISABLE LOCATION.

APROX 70 M2, MODERN OPEN PLAN RETAIL SPACE, ALL ON ONE LEVEL.

PROMINENT STREET FRONTAGE, BRIGHT & BREEZY FITOUT.

PRIVATE AMENITIES, INCLUDING KITCHEN, W.C., STORAGE ETC.

CURRENTLY BEAUTY SALON WITH SOME PARTITIONING, BUT WOULD SUITE MULTIPLE USES.

FLEXIBLE LEASE TERMS, AVAILABLE APRIL 2019

### Open for Inspection

By Appointment.

### Property Features

- 70 SQM aprox MODERN OPEN PLAN RETAIL SPACE
- PROMINENT STREET FRONTAGE

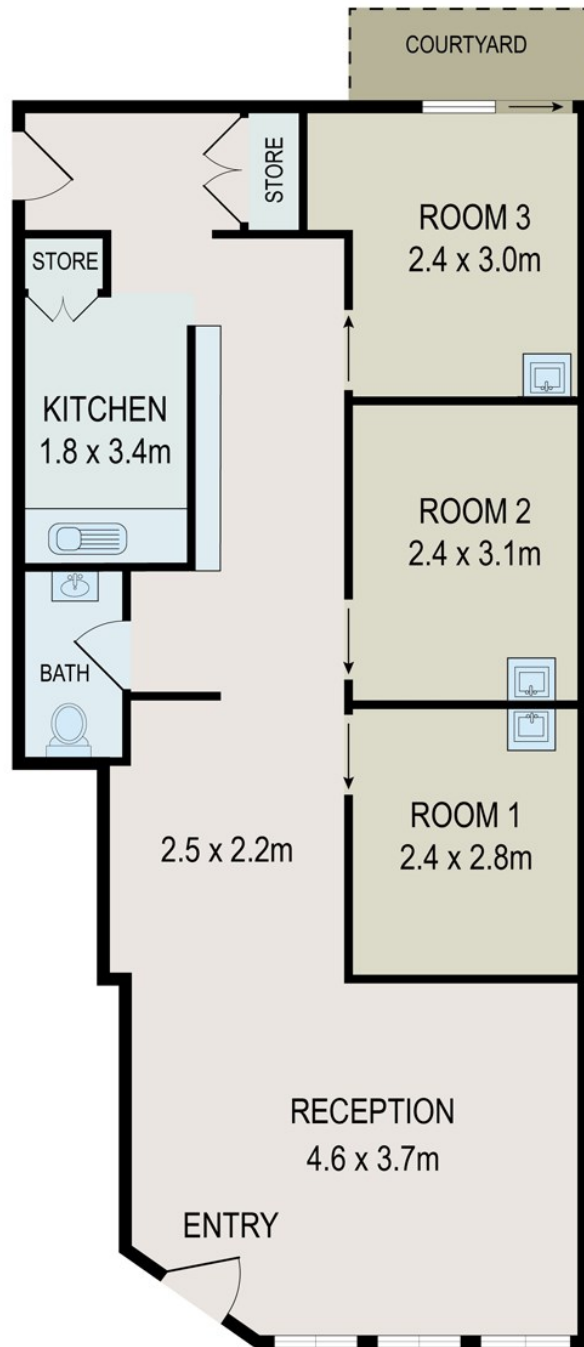
### Listed By

Ernest Salerno

Phone: (02) 96932322



Floorplan



All information contained herein is gathered from all sources we believe to be reliable. However we cannot guarantee its accuracy and interested parties should rely on their own enquiries.

---

## 70 Glebe Point Road, Glebe